

Pixsys
ELECTRONICS



PANNELLO OPERATORE TOUCH SCREEN

TD570 - TD700

Manual de
operatore

AlltronicsPerú
AUTOMATIZACIÓN INDUSTRIAL

1	Introduction.....	3
2	Ordering codes	3
3	Optional devices	3
4	Dimensions and installation	3
5	Hardware data	6
	Mechanical features.....	6
	Standard Hardware configuration	6
	Display and Lamp TD570	6
	Display and Lamp TD700	6
	Connections.....	6
6	Electrical wirings	8
6.1	Terminal block M1	9
6.2	Ethernet connection.....	9
6.3	USB connections	10
6.4	COM1 RS232 connector.....	11
6.5	Audio connector.....	13
6.6	SD/MMC connector	13
6.7	USB-Device connector.....	14
6.8	ETD-EXP connector for data acquisition modules	15
7	Setting of dip-switches.....	16
7.1	Serial dip-switches.....	17
7.2	CPU dip-switches	18
7.3	COM1 dip-switches.....	20
8	Connecting the Terminal to PC.....	21
8.1	Connection to PC by ActiveSync	21
8.2	Connection by FTP	23
8.3	Remote desktop.....	25
9	Auto-start of selected applications	26
9.1	Create autorun.lnk file.....	27
10	Installation program	29
11	Software applications.....	29
12	Notes / Updates.....	31

1 Introduction

Thanks for choosing a Pixsys device.

TD570/TD700 is a Touch-screen graphic Terminal and HMI, Windows-CE based.

Sealing of front panel according to IP54, box sealing according to IP30.

2 Ordering codes

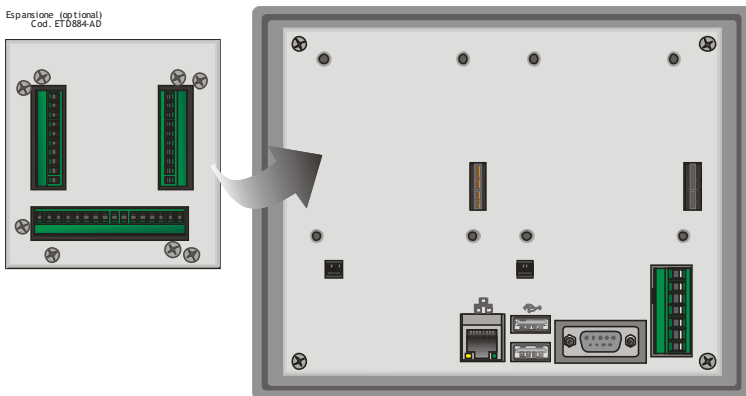
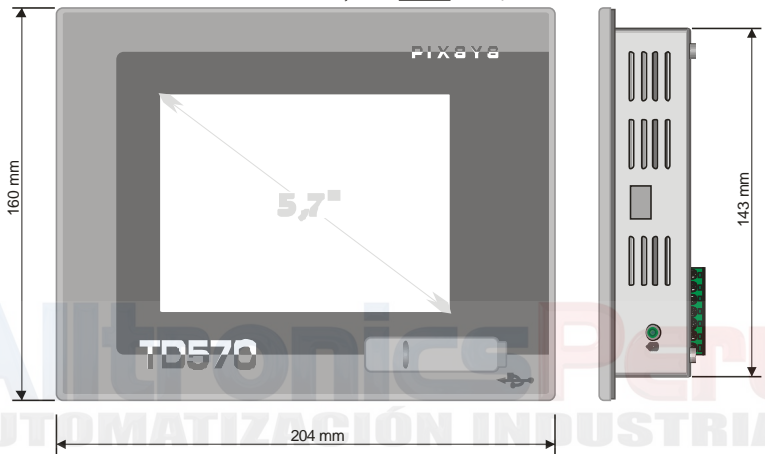
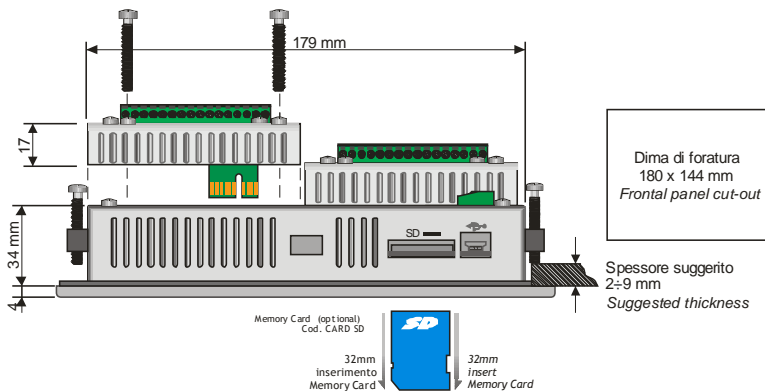
TD570-AD	TOUCH PANEL 5,7" - 640x480 Power supply 12..24V AC/DC $\pm 15\%$ 50/60Hz
TD700-AD	TOUCH PANEL 7" - 800x480 Power supply 12..24V AC/DC $\pm 15\%$ 50/60Hz

3 Optional devices

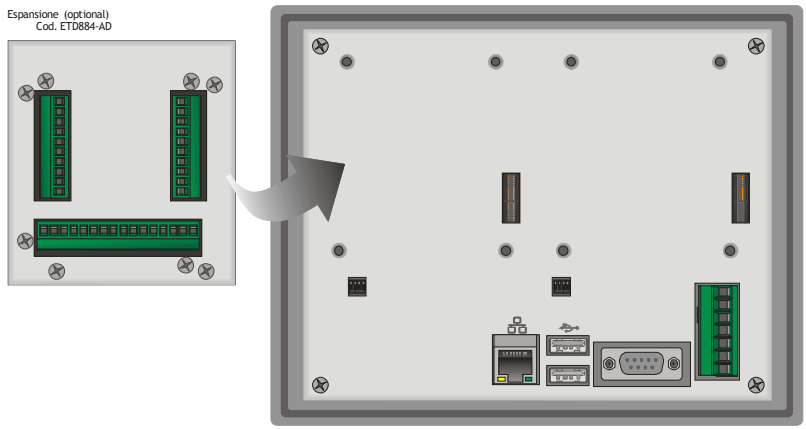
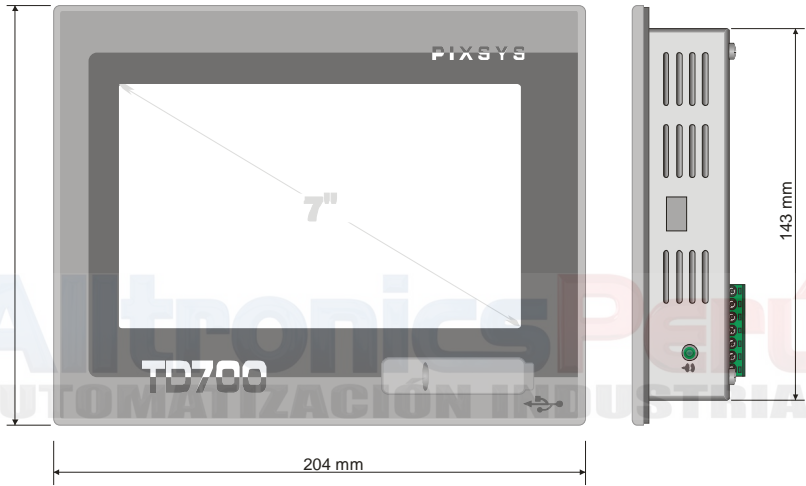
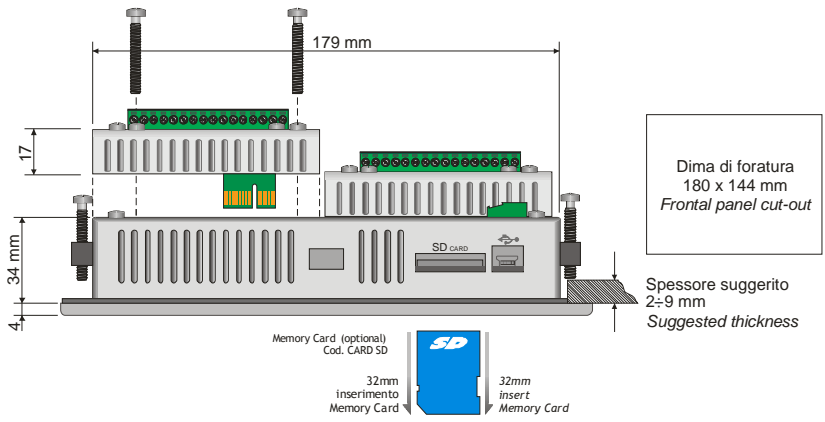
ETD884-AD	Expansion module for load cells; 8 digital I/O, 2 analogue outputs V/mA

4 Dimensions and installation

TD570-AD:



TD700-AD:



5 Hardware data

Mechanical features

Front panel	dull anodized aluminium 8mm
--------------------	-----------------------------

Standard Hardware configuration

CPU	ARM V4i 200 MHz
Audio	AC '97 SoundMAX® Codec

Display and Lamp TD570

Type	LCD TFT touch screen
Dimensions	Active area 5.7"
Resolution	640 x 480
Pixel dimension	0.18 x 0.18 mm
Colors	16 millions
Lamp life	10000 h typical
Lamp power	1.9 W

Display and Lamp TD700

Type	LCD TFT touch screen
Dimensions	Active area 7"
Resolution	800 x 480
Pixel dimension	0.1905 x 0.1905 mm
Colors	16 millions
Lamp life	20000 h typical
Lamp power	1.58 W

Connections

Expansion slot	1 data acquisition Slot
COM ports	1 LAN (10/100), Ethernet RJ-45 1 RS232 opto-isolated 1 RS485 opto-isolated 1 CAN opto-isolated

I/O Port	2 rear USB port 2.0 12 Mbits/S 150mA
Audio	1 line Out
Power supply	12..24V AC/DC $\pm 15\%$ 50/60Hz
Power consumption	Typical 3,7 W Max 4,8 W

AlltronicsPerú
AUTOMATIZACIÓN INDUSTRIAL

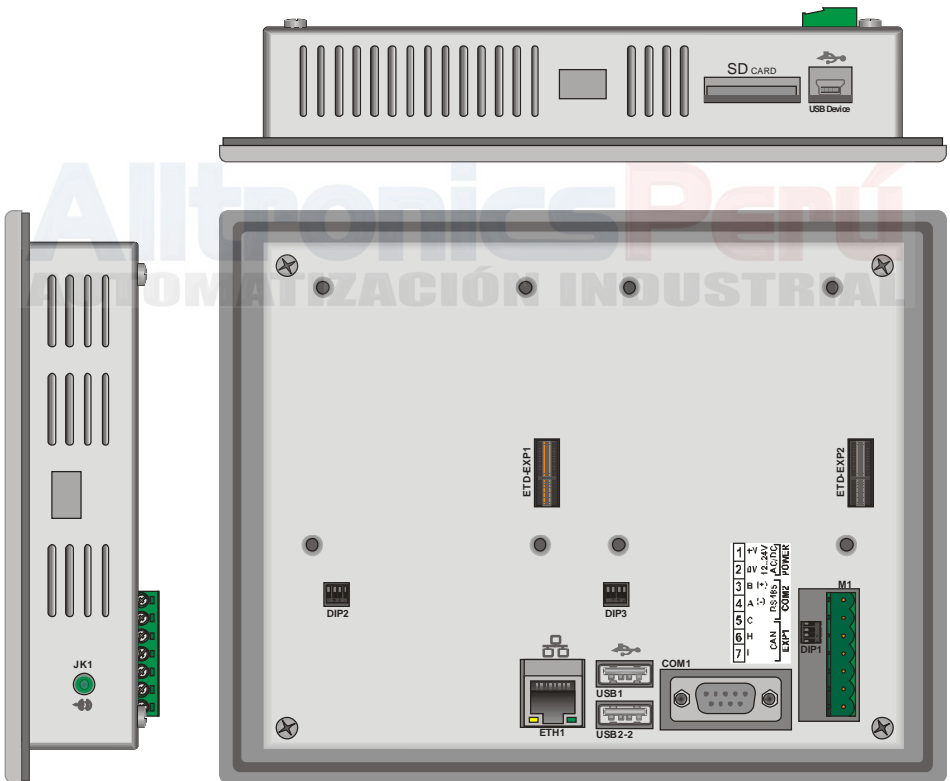
6 Electrical wirings



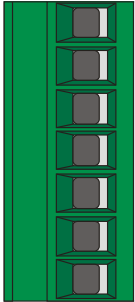
Although this device has been designed to resist noises in an industrial environment, please notice the following safety guidelines

- Separate control lines from power wires
- Avoid proximity of remote control switches, electromagnetic meters, powerful engines
- Avoid proximity of power groups, especially if phase-controlled

View of connectors on TD570-AD and TD700-AD:

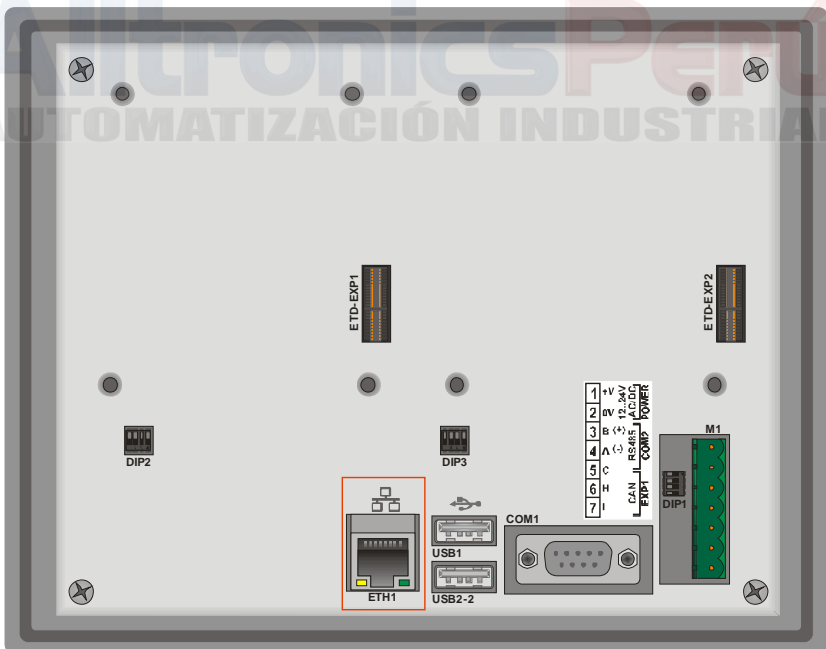


6.1 Terminal block M1

		M1	
	1 +V	1	Positive power supply of device
	2 0V	2	Ground power supply of device
	3 B (+)	3	Rs485+ opto-isolated
	4 A (-)	4	Rs485+ opto-isolated
	5 C	5	Isolated ground for serial
	6 H	6	CAN H opto-isolated serial
	7 L	7	CAN L opto-isolated serial

6.2 Ethernet connection

Connector RJ45



Ethernet Connector 10/100 Base-T available on rear side of Terminal, below terminal block of power supply. It allows to connect the device to local network.

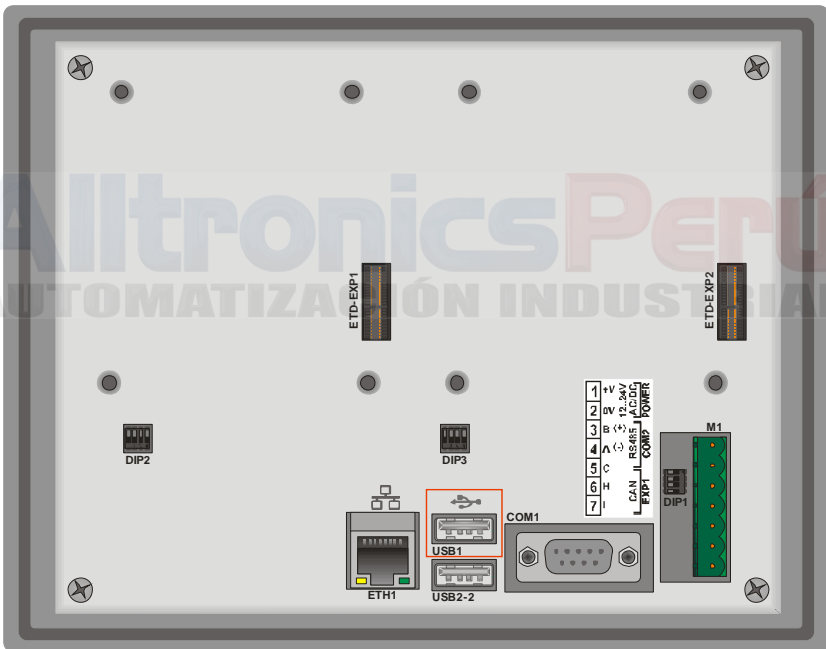
Green led indicates that link is available and device is connected to network.

Yellow led indicates that data transmission/receipt is in progress.

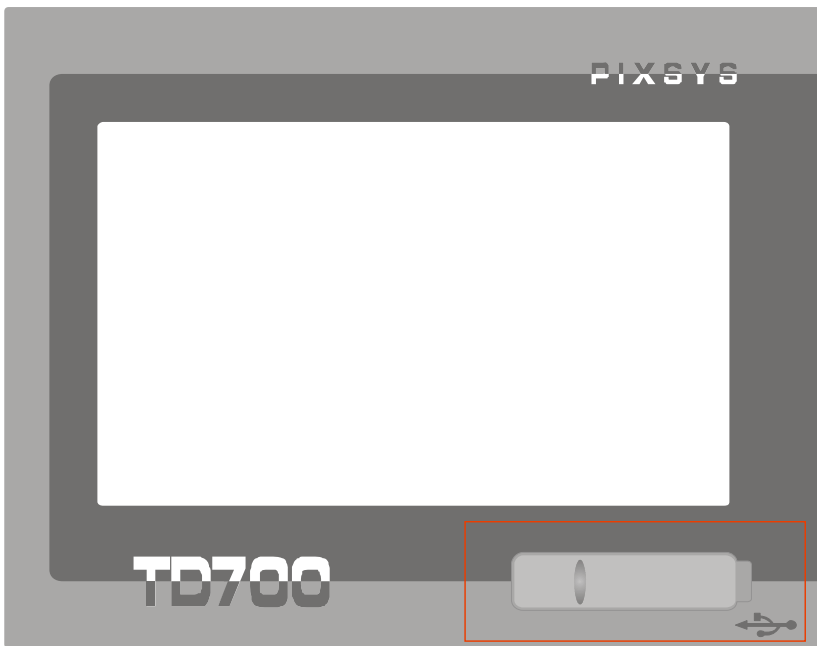
6.3 USB connections

The device is provided with two USB 2.0 connectors.

USB1 is located on the rear side of the Terminal beside RJ45 Ethernet connector :



USB2 is located on the front panel and it is protected by a silicon cover:



The connector on front panel allows to connect plug&play peripheral devices also when the Terminal is panel-mounted. USB Peripheral devices include keyboards, mouse, serial converters, barcode readers etc. Max current available on USB connector is 150mA. If using pendrives, the system will rename “Harddisk” the first inserted pendrive and “Harddisk2” the second pendrive.

6.4 COM1 RS232 connector

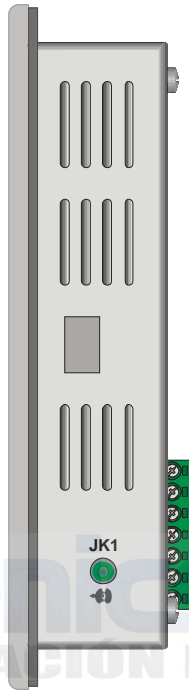
COM1 RS232			
<p>COM 1 FEMALE / FEMMINA</p>	1		
	2	SIN	Serial In or Receive Data
	3	SOUT	Serial Out or Transmit Data
	4	RS-	RS485 – (A)
	5	GNDi	Serial isolated ground
	6	DSR	Data Set Ready

	7	RTS	Request To Send
	8		
	9	RS+	RS485 + (B)

AlltronicsPerú
AUTOMATIZACIÓN INDUSTRIAL

6.5 Audio connector

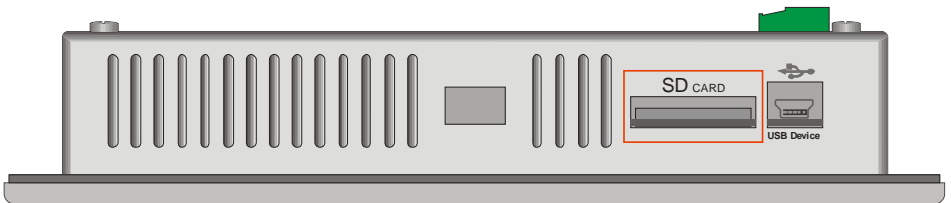
Audio Jack 3.5mm



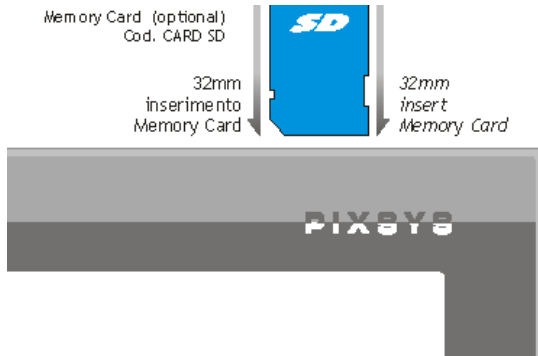
A non-amplified stereo output is located on the right side of the device.

6.6 SD/MMC connector

SD/MMC reader, push-pull type



The connector is located on the upper side of the device , close to mini-usb connector. It is push-pull type, therefore enter memory card till a click is produced and release it (see diagram below) .

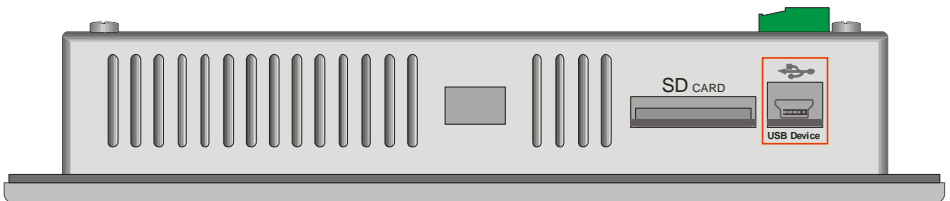


To extract the Memory, press it until a click is produced and pull it.

The device can support SD and MMC memories up to 2GB, it does not support SD-cards HC. The operating system identifies the memory as “StorageCard”.

6.7 USB-Device connector

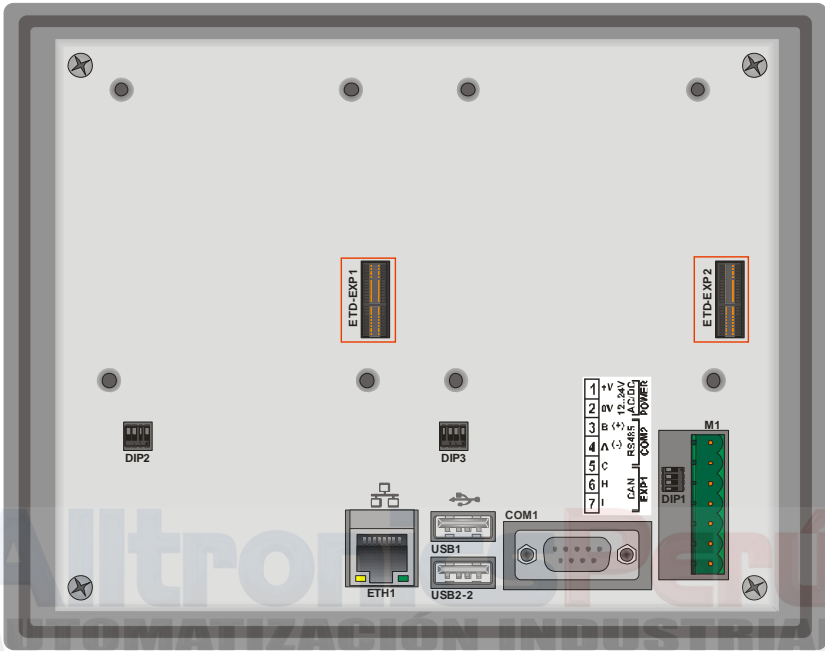
Mini-USB connector type B



Located on the upper side of the device beside the SD/MMC slot, it is conceived only for connection to Windows-based PC.

6.8 ETD-EXP connector for data acquisition modules

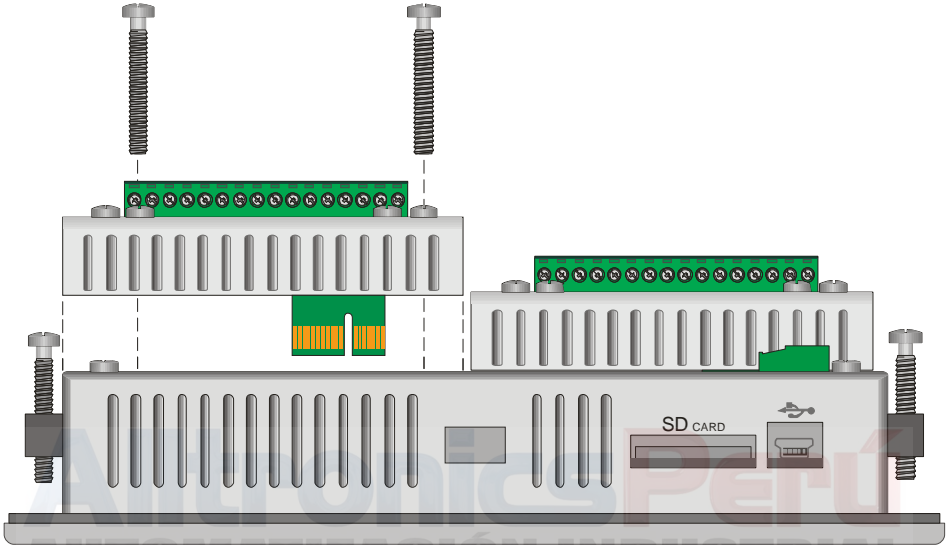
Connectors for data acquisition modules :



The “ETD-EXP1” “ETD-EXP2” connectors allow quick connection of proprietary expansion slots for data acquisition purpose. Please proceed as follows:

Switch the device off, disconnect power supply, enter the expansion slot , fix the four screws contained in the package, connect power supply and switch the device on.

Example of connection ETD884-AD:



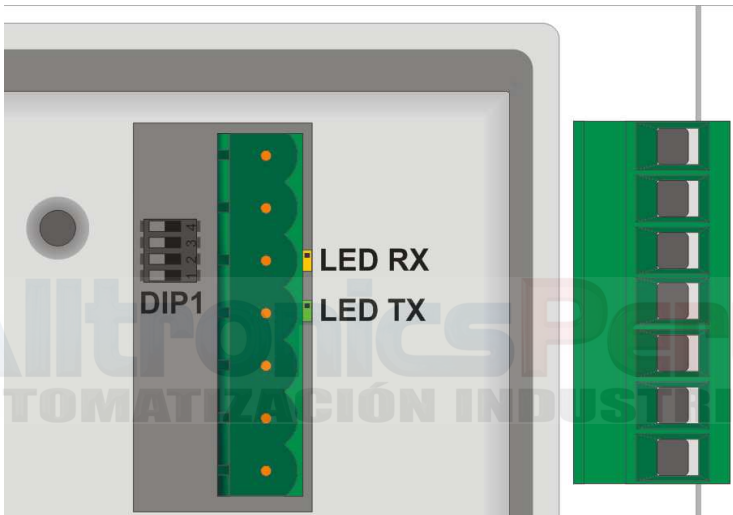
7 Setting of dip-switches

TD570/TD700 are provided with some internal dip-switches (which may be accessed by special holes on the enclosure), allowing the user to adapt the device to specific requirements.


N.B.: Switch the device off and disconnect power supply before proceeding to any hardware setting.




7.1 Serial dip-switches

DIP1 is conceived to set the serial communication. It is placed underneath power supply terminal block, therefore the terminal block must be removed in order to get access to DIP1.



The following table shows the optional settings of this dip-switch:

Input type	Dip-switch	Notes
Disabled	 <p>The diagram shows a 4-position dip-switch with the label 'ON' above it. The positions are numbered 1, 2, 3, and 4. All four switches are in the 'ON' position, indicated by black bars in the top half of each switch.</p>	Default setting

CAN Termination		Chiude tra linee CANH e CANL una resistenza di terminazione di 120 Ohm.
RS485 Termination		Close a termination resistor 330Ohm between RS485+ and RS485-
Polarization RS485		Close polarization resistors on RS485 line

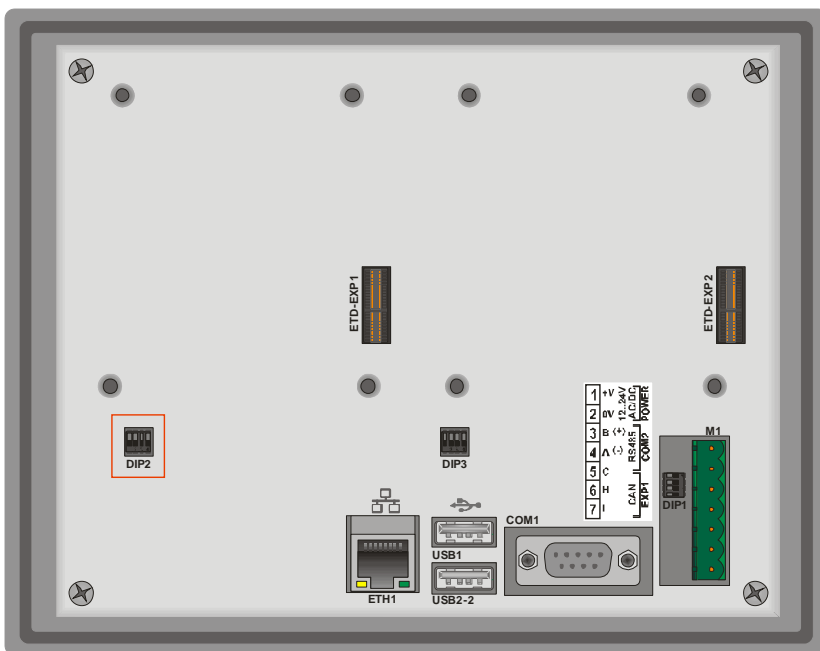
If the device is used as Master RS485, the dip-switches will have to be set as “RS485 polarization”.

If the device is used as Slave RS485, the dip-switches must be set as “RS485 termination”.

Beside terminal block “M1” there are two signal LEDs. The yellow LED indicates that data are being received on RS485. The green LED indicates that data transmission is in progress on RS485. In this case the LED is ON only if dip 3 and 4 of DIP1 are set to ON, with consequent polarization of RS485 line.

7.2 CPU dip-switches

DIP2 is located at the bottom rear side.



This dip-switch enables/disables the protection of flash memory writing.

Preventing the writing on flash-memory it will not be possible to create/save new files. The table below provides the list of possible configurations:

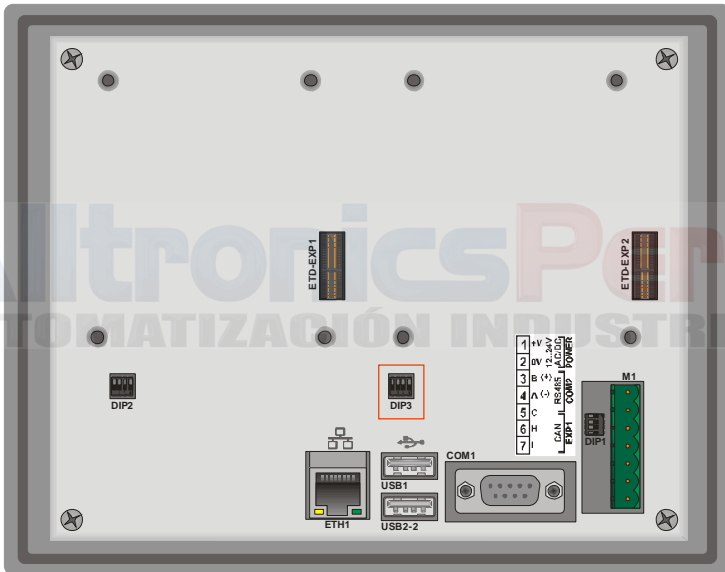
Input type	Dip-switch	Notes
Default		Default position: configuration for TD570/TD700.
Prevent writing on flash memory		Raising “DIP2” to ON , the writing on flash memory is not allowed.

N.B.: Dips no. 1, 3 and 4 are directly connected to CPU and they identify the type of device currently used. Therefore their

tampering may affect the correct operation of the Touch-screen!

7.3 COM1 dip-switches

"DIP3" dip-switch allows selection between debug serial port (to be used for software developments) and system COM1 serial port. Both serial ports are available on 9poles connector with RS232 protocol.



Dip-switches have to be selected as follow:

Input type	Dip-switch	Notes
RS232 COM1 Serial		COM1 serial port enabled

**RS232 debug
serial**



Debug serial port enabled

8 Connecting the Terminal to PC

8.1 Connection to PC by ActiveSync

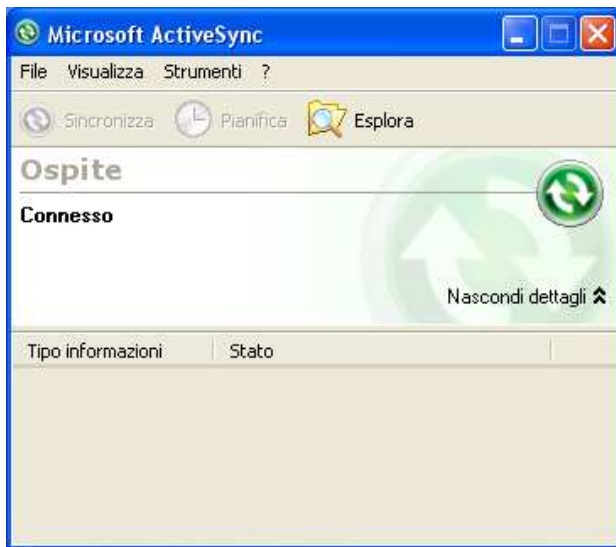
TD570/TD700 are relying on Windows CE operating system, therefore they can be easily connected to any Windows-based PC.

To connect the device to a PC, it is necessary to get a USB type A - mini USB type B cable (Pixsys code 1620.00.082) and the software ActiveSync (for Windows 2000 up to Windows XP) or alternatively the Windows Mobile Device Centre (for Windows Vista and Windows 7).

Both applications are available for free download at www.microsoft.com.

After installing the above mentioned software applications, power up the device and connect it to PC by USB cable. It will take a few minutes for the PC to automatically install the device (this will take place only at the first connection).

Once the installation of drivers will be completed, the following window will be automatically visualized:



Windows 2000..Windows XP



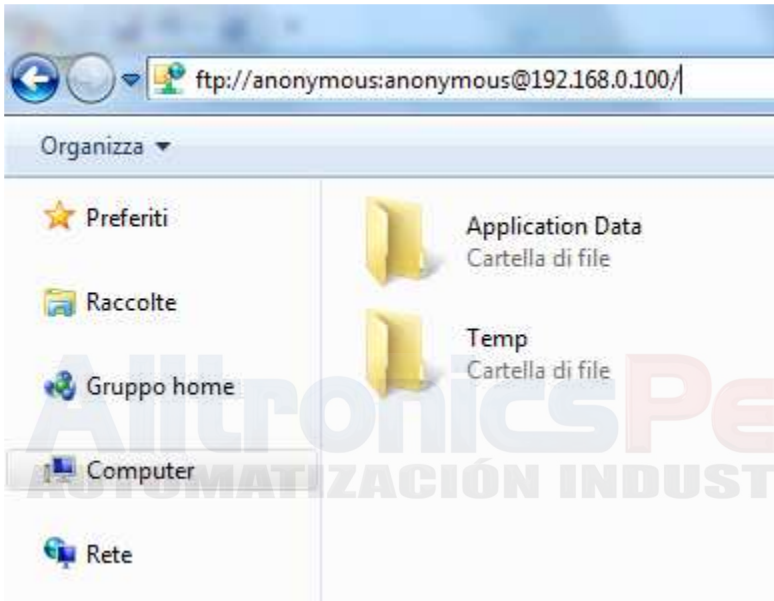
Windows Vista and Windows 7

By means of these software tools, the device is identified by the PC as a mass storage peripheral and this way it will be possible to explore files and transfer them from PC to device and viceversa.

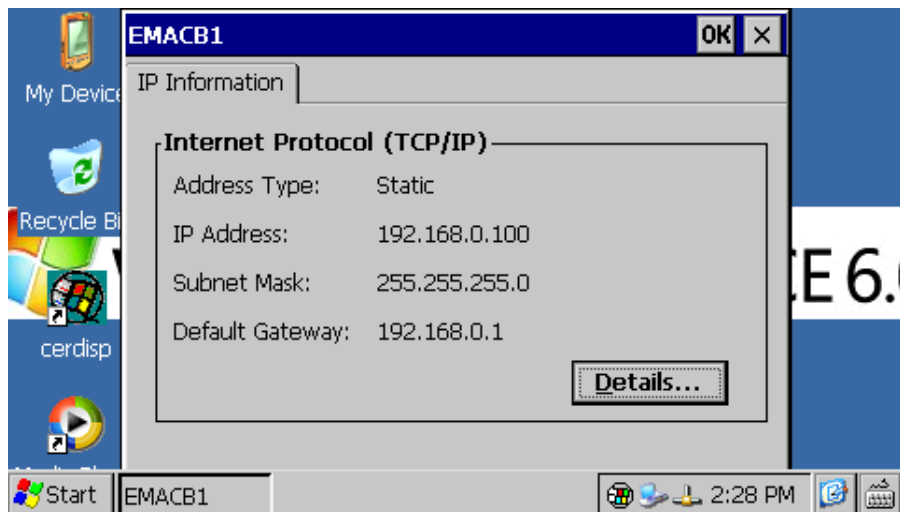
8.2 Connection by FTP

TD570/TD700 support FTP protocol and this allows network files transfer between PC and Terminal.

To access the folders on the device, just open “Explorer” and type: “ftp://anonymous:anonymous@192.168.0.100/” (being “192.168.0.100” the IP address of the device).



To get the IP address of the device just double-click on network icon on Windows taskbar. A screenshot containing all details about network will be displayed.



Anyway we suggest to use an FTP client for data transfer, as this is normally simpler and quicker to use.

An example is FileZilla Client FTP, available for free download at <http://filezilla-project.org/download.php>

Alltronics Perú
AUTOMATIZACIÓN INDUSTRIAL

8.3 Remote desktop

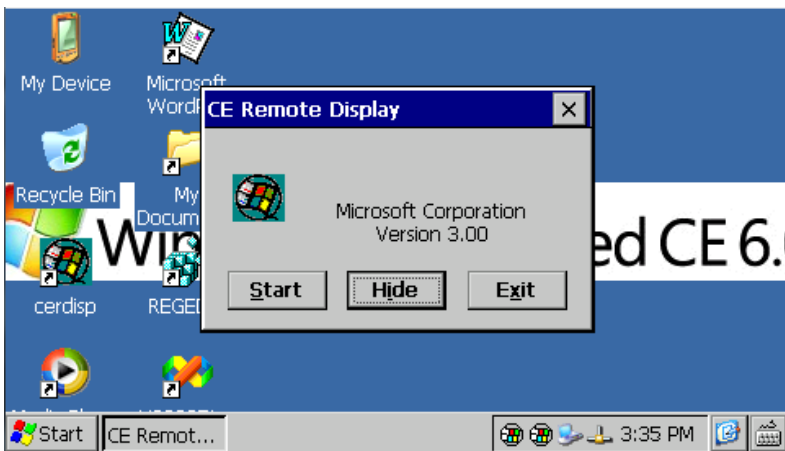
The device is integrating Remote Desktop feature.

This requires “cerdisp.exe” to be run on the device (it is already pre-installed on it) and “cerhost.exe” to be run on PC.

As a first step the device must be connected to local network, then double-click the desktop “Cerdisp” icon



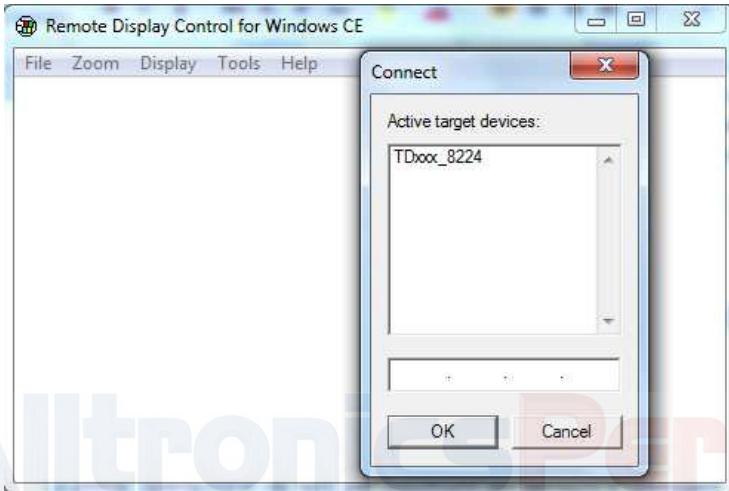
Click on START icon of the form :



At this stage run the “cerhost.exe” application on the PC which will be used to control the TD430.

A window with different options will be displayed , click on “File” and then on “Connect”.

A further window will show in a few seconds a list of devices available for connection.



Double-click the selected device to immediately visualize the remote desktop, allowing full control of the connected device.

9 Auto-start of selected applications

The device integrates also the possibility to run automatically some selected applications.

How it works : a link file (.lnk) is created on the “Nandflash” disk of the device (called “root” from now on) and it is named “autorun.lnk”, pointing to the application which should be run automatically at startup.

Autorun.lnk files are handled by the software as follows: the application pointed by the autorun available on the device root will be run first; in case a USB peripheral or a memory card are inserted at startup, the software will stop the application running

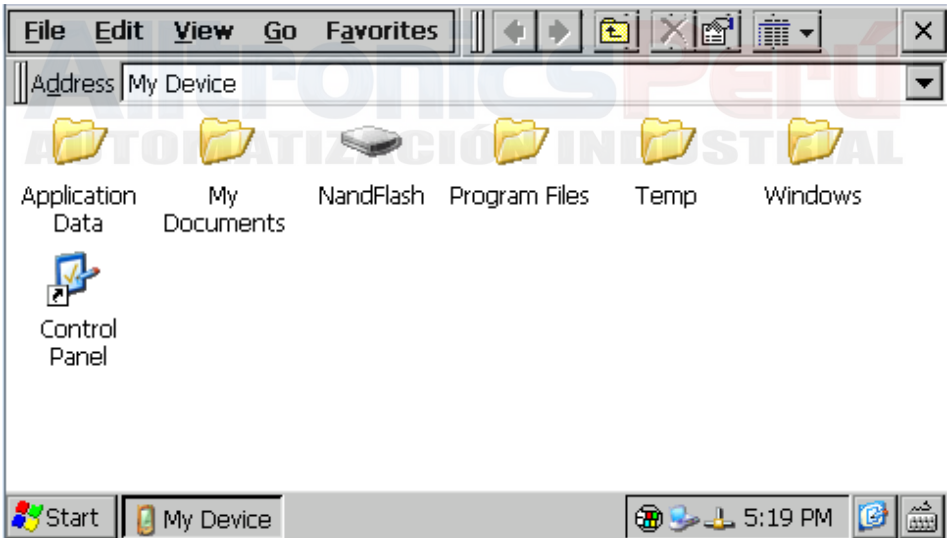
on the device and will start the application pointed by the autorun.lnk available on the root of the USB peripheral or of the memory card.

9.1 Create autorun.lnk file

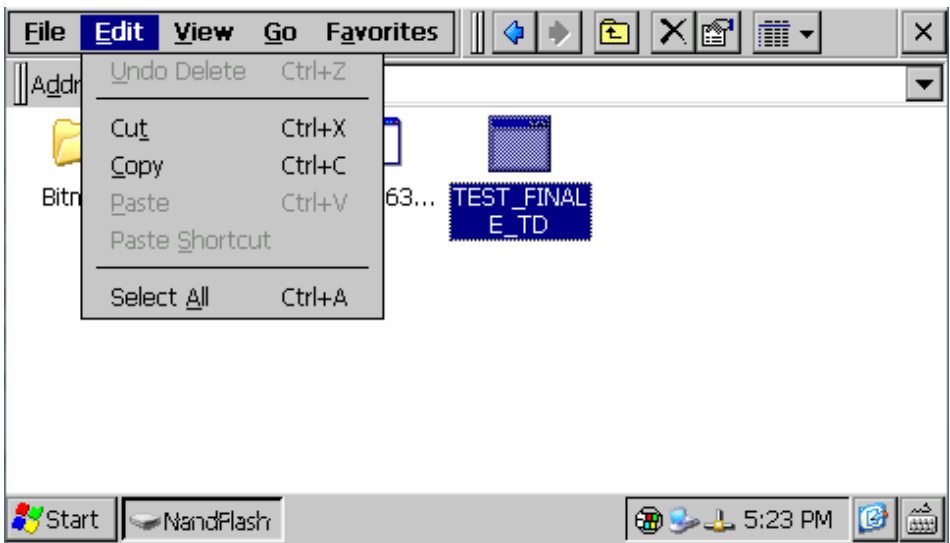
N.B.: Whenever an application is run automatically by autorun, Windows desktop is not run. Therefore if the running application should be closed, the device will still display the latest window.

To remove the autostart, it is necessary to connect the device to PC and delete the “autorun.lnk” file. Restarting the device it will be possible to visualize the standard desktop.

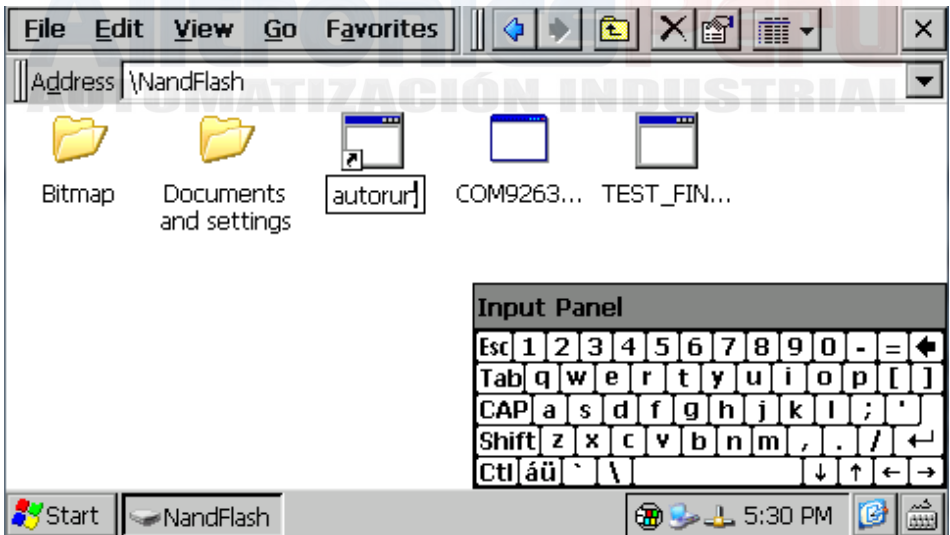
To create the “autorun.lnk” file follow the steps below: double-click “My device” icon available on desktop and go to the Directory containing the selected application.



Select the file, click “Edit” and “Copy”



Go to the device root (nandflash) or to USB peripheral (Harddisk) and click “Edit” and “Paste Shortcut”.
Open video keyboard and rename the Autorun file



Restarting the device, the application pointed by the created Autorun file will automatically start.

10 Installation program

Software applications to be installed on TD570/TD700 must be compatible with Windows CE for ARM V4i platform

Usually these applications are provided as a single installation file with .CAB extension.

The installer service already stored on the device will automatically recognize the installation package and will guide the user step by step through the correct proceeding.

Pixsys has also developed an installer package which recognizes the proprietary installation files with .zTd extension. This application and the installation files are supplied exclusively by Pixsys.

11 Software applications

TD430 relies on Windows CE operating system. Clicking the keyboard icon on taskbar , it is possible to visualize on display two different keyboards:“Large” is recommended for Pixsys TD570 and TD700 while “keyboard” is recommended for TD430. The operating system includes followings applications: Microsoft Word Pad and Windows Media Player 9.

Microsoft Word Pad allows to read and create text files directly on the TD570/TD700.

Windows Media Player 9 allows to reproduce audio files .wav and .mp3 as well as short video files.

Some additional applications aim to correct operation of the device: cerdisp.exe , regedit.exe, VS2005tcp.exe.

As already described , “Cerdisp.exe” allows to access the device as remote desktop.

The “regedit.exe” application allows to access, visualize and modify registry keys.

N.B.: Altering registry or registry keys by non-expert users may lead to incorrect operation of the Terminal!

The “VS2005tcp.exe” application allows to connect the device by Ethernet connection to development environment Visual Studio 2005.

All described applications are available for immediate access on desktop of the device.



12 Notes / Updates

Alltronics Perú
AUTOMATIZACION INDUSTRIAL

Alltronics Perú
AUTOMATIZACIÓN INDUSTRIAL

Alltronics Perú
AUTOMATIZACION INDUSTRIAL

Alltronics Perú
AUTOMATIZACION INDUSTRIAL

Alltronics Perú

AUTOMATIZACIÓN INDUSTRIAL

PIXSYS srl

www.pixsys.net

e-mail:

sales@pixsys.net

support@pixsys.net

2300.10.135 - Rev. A 031210

Alltronics Perú
AUTOMATIZACIÓN INDUSTRIAL

Av. Argentina N° 523 Tda. A12 C. C. ACOPROM Lima 01 - Perú
Telfs.: 51+1+719 9810 / 51+1+719 9811 Cel.: 51+999938660 / 51+9852-72098
E-mail: ventas.1@alltronicsperu.com ventas.2@alltronicsperu.com

www.AlltronicsPerú.com